



2024 GCE O-LEVEL EXAMINATION RESULTS RELEASE

10 January 2025



EXPLORE OPPORTUNITIES!

Remember that while **everyone's educational journey is different,**
we can each have a fulfilling outcome!

Stop

- Calm yourself down. Take a few deep breaths.

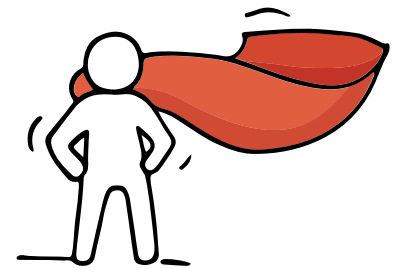
Think

- What are your strengths, interests and types of jobs you are interested?
- What are the courses I can take to prepare for these jobs?

Do

- How should I make best use of all my 12 choices!
- What happens if I do not receive a posting?
- Have conversations with trusted adults who know you well to advise and guide you (parents, teachers, ECG Counsellor).

Managing your emotions well will allow you to stay calm and make rational decisions.

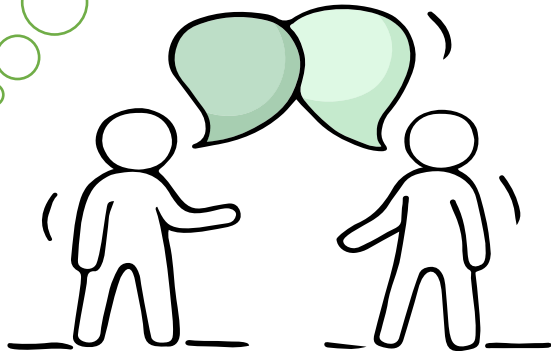


Many pathways, Many opportunities!

Reaching out for support is a sign of strength

If you have questions about your options or are not coping well, you can reach out to trusted adults such as a parent/guardian, teacher, School Counsellor or ECG Counsellor. You can also talk to a trusted friend.

Who can we go to for ECG advice?



Make an appointment to speak with your ECG Counsellor in school

OR

Make an ECG counselling appointment via the ECG Centre @ MOE
<https://go.gov.sg/moe-ecg-centre>



Support is readily available for you.

There are other hotlines and chats available if you are more comfortable seeking help using these platforms.

These can also be found in the infographic which you accessed earlier.



SOS provides round-the-clock emotional support for those in distress, thinking of suicide or affected by suicide.

Call: **1767**
(24-hour helpline)

Whatsapp: **9151 1767**
(24-hour Care Text)

TOUCHline is a helpline to provide youths with emotional support and practical advice.

Call: **1800-377 2252**
*Monday- Friday (Excluding Public Holidays):
9am – 6pm*

Community Health Assessment Team (CHAT) provides personalised and confidential mental health checks and consultation for youths. To speak with a youth support worker, you can:

Visit: **CHAT Hub at *Scape, 2 Orchard Link, #04-01A**

Call: **6493 6500/ 6501**

Email: **CHAT@mentalhealth.sg**

Carey is an online platform by Care Corner that provides free mental health check-ins with mental health professionals. Find out more at:
<https://carey.carecorner.org.sg/>

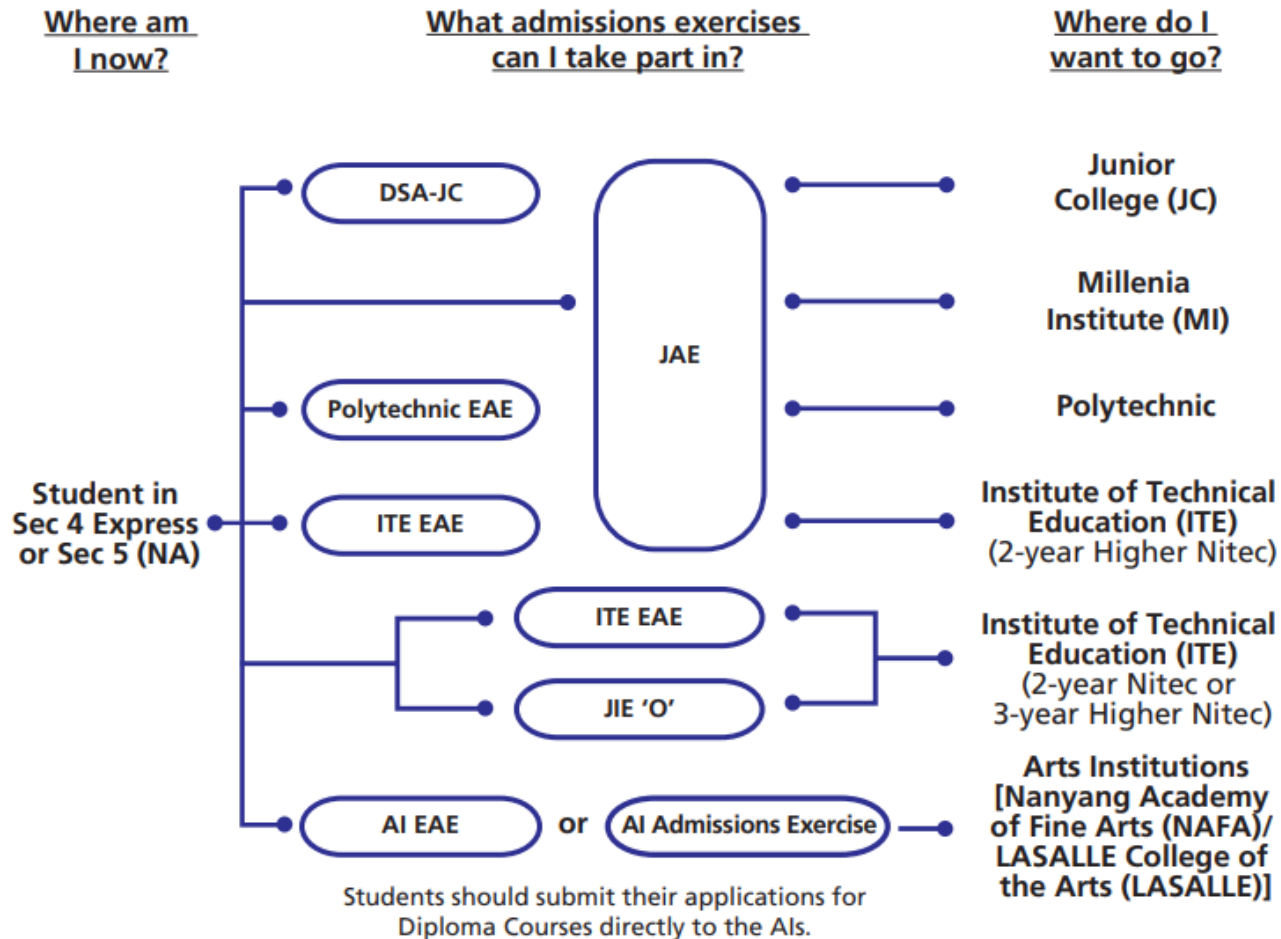
mindline.sg is an online platform that provides tools, tips and resources to help you manage your health and well-being. Find out more at:
www.mindline.sg



eC2 is an e-Counselling Centre where you can talk to a trained counsellor about the issues you are facing, right where you are.

Chat with a counsellor at:
www.ec2.sg
*Monday – Friday (Excluding Public Holidays):
10am – 12pm & 2pm – 5pm*

Post-Secondary Admissions Exercises for O-Level Students



DSA: Direct School Admission
JAE: Joint Admissions Exercise
AI: Arts Institution

EAE: Early Admissions Exercise
JIE: Joint Intake Exercise

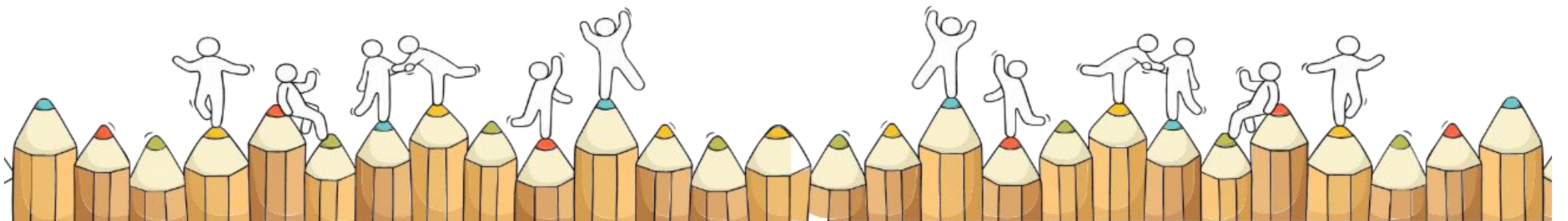
Learn more about the post-secondary education institutions



<https://www.moe.gov.sg/post-secondary/admissions>

Application Timeline

Admissions Exercises	LASALLE NAFA	JAE JIE 'O'
Application Period	Starts Oct 2024	Jan 2025



You should be receiving:

- **GCE O-Level result slip and certificate**
- **Form A (digital)**
 - registered email address (3pm onwards on 10 Jan 2025)
 - JAE Internet System (JAE-IS) (Singpass)(during application period)

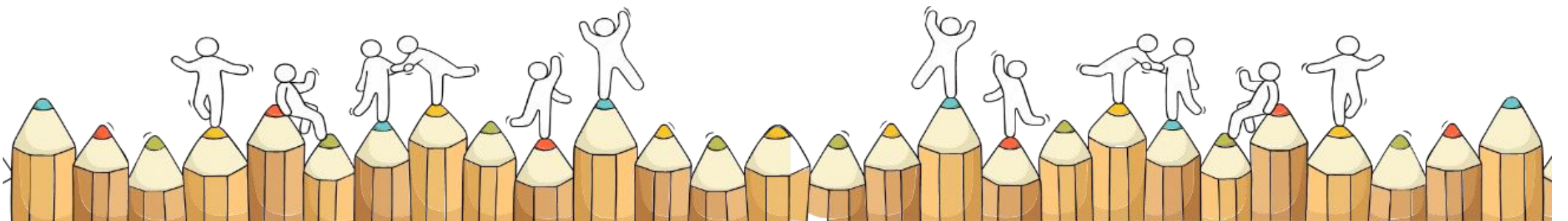


Form A

contains:

- your GCE O-Level Examination results
- Gross aggregate scores for JC/MI/Polytechnic/ITE aggregate type
- Courses you are eligible to apply in the JAE

Receive email on your eligibility to participate in JAE



When choosing...

IMPORTANT

- Strongly encouraged to use the [JAE Worksheet](http://www.moe.gov.sg/jaeworksheet) (www.moe.gov.sg/jaeworksheet) before submitting online application
- Consider your choices wisely based on merit according to net aggregate score
- [Make full use of all 12 choices](#)
- List them in order of preference in your application.
- refer to the [full listing of 2025 JAE courses](#)
- Appeal for JC: need to meet COP of JC course for the year

Resources



[SchoolFinder \(JCs and MI\)](http://www.go.gov.sg/sf-jcmi)

www.go.gov.sg/sf-jcmi



[CourseFinder \(Polytechnics and ITE\)](http://www.go.gov.sg/cf)

www.go.gov.sg/cf



[JAE worksheet](http://www.moe.gov.sg/jaeworksheet)

www.moe.gov.sg/jaeworksheet



[Education & Career Guidance resources](http://www.moe.gov.sg/ecgoverview)

www.moe.gov.sg/ecgoverview

Bonus Points

Types	Number of bonus points
CCA grade Excellent A1 or A2	2
CCA grade Good B3 to C6	1
English and Higher Mother Tongue Language grade A1 to C6	2
Chinese or Malay (Special Programmes) or Bahasa Indonesia grade A1 to C6	2

Max of 4 bonus points



Joint Admission Exercise (JAE)

Receive	digital Form A
Apply	<ul style="list-style-type: none">Registered email address (Fri, 10 Jan 2025, 3pm)JAE-IS website (JAE Internet System) (www.moe.gov.sg/jae) using SingPass (Fri, 10 Jan 2025 – Wed 15 Jan 2025)
Application phase	Fri 10 Jan 2025, 4pm – Wed 15 Jan 2025, 4pm
<u>Points to Note</u> during Application	<p>You are strongly encouraged to use JAE worksheet <u>before</u> submitting your online application.</p> <ul style="list-style-type: none">JAE website for more details on the JAE (www.moe.gov.sg/jae)SchoolFinder for details of the offerings by and previous entry score ranges for JCs and MI (www.moe.gov.sg/schoolfinder)CourseFinder for courses offered by the polytechnics and ITE, based on aggregate type and area of interest (www.moe.gov.sg/coursefinder)

Release of JAE posting results

Application Outcome	<u>Tues, 4 Feb 2025, 9am</u> <ul style="list-style-type: none">• SMS (local mobile number in application)• JAE-IS (using Singpass)
Posted to JC/MI	Reporting date: <u>Wed, 5 Feb 2025</u> If students are unable to report to their posted JC or MI on 5 Feb, due to valid reasons, they may contact their posted school directly to confirm that they are taking up the place, and the school will be able to reserve the place for them.
Posted to Polytechnic / ITE	If you are posted to a polytechnic course, By <u>end Feb 2025</u> Applicants will receive an email with enrolment details. If you are posted to an ITE course, By <u>Tues, 4 Feb 2025</u> Applicants will receive an email with enrolment instructions.

JAE Appeal

Application	<ul style="list-style-type: none">• Must <u>meet both the minimum entry requirement</u> of the course and the <u>net aggregate score</u> of the lowest-ranked applicant posted to the course• Appeals are evaluated on a case-by-case basis by the institutions <p>JC/MI: Visit school website to find out about appeal process and timeline</p> <p>Polytechnic/ ITE: Check appeal submission timeline and submit through JAE Online Appeal Portal (Tues, 4 Feb 2025, 9am to Fri, 7 Feb 2025, 4pm)</p>
Appeal Outcome	<p>While waiting for the outcome, you should still report to the institution you are posted to.</p> <p>JC/MI: Refer to the school websites to find out when and how the appeal outcome will be released.</p> <p>Polytechnics/ ITE: Fri, 21 Feb 2025, 9am by email and SMS to log in and view your appeal outcome in the portal</p>

Direct School Admission (DSA)- Junior College

- Students who had accepted offers through the 2024 Direct School Admission – Junior Colleges (DSA-JC) will be admitted to their chosen JC if they have met the eligibility criteria for admission based on their GCE O-Level examination results.
- Students admitted to a JC through DSA-JC will not be eligible to participate in the JAE.
- **Students who do not meet the JC admission criteria may take part in the JAE** to apply for courses which they are eligible for.
- More details on DSA-JC can be found at www.moe.gov.sg/dsa-jc.

Early Admission Exercise (EAE) - Polytechnic

- Students who had **accepted conditional offers** to a polytechnic course through the Polytechnic EAE in 2024 and have their offers confirmed based on their GCE O-Level examination results **will not be eligible to participate in the JAE.**

Their EAE offers are confirmed if they meet the following criteria:

- A net ELR2B2 score of 26 points or better for the GCE O-Level examinations; **and**
- Minimum Entry Requirements for the respective polytechnic course.

- **Students who do not meet the above criteria may take part in the JAE.**
- More details on Polytechnic EAE can be found at <https://eae.polytechnic.edu.sg>

Early Admission Exercise (EAE) - ITE

- Students who had **accepted conditional offers** to an ITE course through the ITE EAE in 2024 and have their offers confirmed based on their GCE O-Level examination results will **not be eligible to participate in the JAE.**
- Their EAE offers are confirmed if they meet the subject-specific minimum entry requirements for the course.
- More details on ITE EAE can be found at www.ite.edu.sg/admissions/full-time-courses/highernitec/eae/.

Polytechnic Foundation Programme (PFP)

(Obtained a raw ELMAB3 aggregate of **12** points or lower and meet subject-specific requirement.

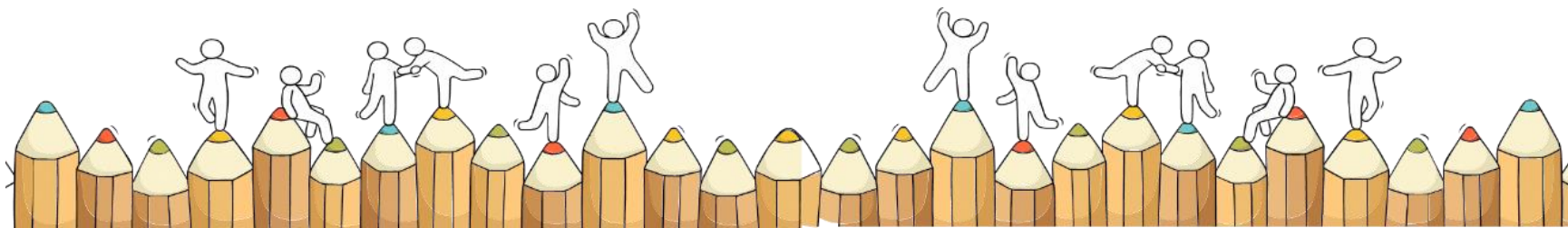
1-Yr practice-orientated curriculum at Poly, selected Poly diploma courses, subjected to passing all modules in the 1-Yr programme)

**For
4N OOS**

Withdraw from Sec 5	only after you have accepted the PFP offer Attend Sec 5 classes till Fri, 31 Jan 2025
Application for PFP	Fri 10 Jan 2025, 1.30pm to Wed, 15 Jan 2025 4pm
Receive	<u>Form P</u> (contain unique password)
Apply	Log in to: PFP AE Portal (PFP Joint Admissions Exercise)
Application outcome	<ul style="list-style-type: none">• PFP application results will be through the PFP AE portal (Wed 22 Jan 2025, 1.30pm)• Accept, reject or appeal for change of course by Mon 27 Jan 2025, 4pm• Respective polytechnics will inform on the enrolment dates for the PFP.
<ul style="list-style-type: none">• Being eligible for PFP does not guarantee placement into a PFP course.	

For 4N students who are interested in PFP now

- Students who have **accepted a place in the earlier application phase of the DPP** in Dec but decide to take up a PFP offer now **must withdraw** from the DPP **first** before taking up the PFP offer.
- DPP-enrolled students should check with ITE class advisor for more details on the DPP withdrawal process and deadlines for withdrawal.
- You can **only accept either** PFP or DPP, if you accept both offers will have **both offers voided**.

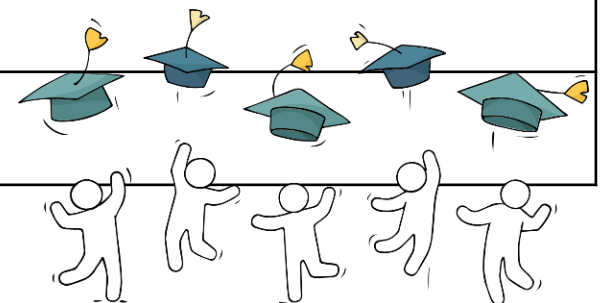


Direct-Entry-Scheme to Poly Programme (DPP)

(Obtained a raw ELMAB3 aggregate of **19** points or lower and meet subject-specific requirement.
Selected 2-Yr Higher Nitec at ITE mapped to Poly diploma programme)

**For
4N OOS**

Receive	Form N for eligible candidates
Apply	Apply at DPP application portal with SingPass
2nd Phase Application phase	Fri, 10 Jan 2025, 12am to Tues, 14 Jan 2025, 11.59pm
Application outcome / Appeal	Fri, 17 Jan 2025, 9am Accept or reject DPP offer by Tues, 21 Jan 2025, 11.59pm To check posting results through DPP application portal https://www.ite.edu.sg/apply-for-ITE-courses
Progress to ITE	Accept DPP: Report to ITE on Wed, 22 Jan 2025



SUPPORT FROM SCHOOL



Appeal for Review of Results

Closing Date	By <u>Thurs, 16 Jan 2025</u>
Application	Obtain Form from General Office (Mdm Nurlena/ Mdm Goh) and complete it duly
Appeal Outcome	Release through school – <u>Mon, 24 Feb 2025</u>
Appeal Fee	\$114.45 / subject

Once you receive your certificate,

- Check personal particulars.
- If there is an error in your name due to misspelling, immediately alert Mdm Tan Yin Leng TODAY.
- You will need to pay an administrative fee of \$50 for amendments on each O-Level certificate.

3Rs when deciding on Private Education

Reasons

- Why are you furthering your studies?
- What are the job prospects for your preferred course?

Readiness

- How ready are you to further your studies?
- Can you cope with the academic rigour and assignment deadlines?
- Can you fund your studies?

Risks

- Do you know the possible drawbacks?
 - Your expected returns may not exceed the investments you put into your private education.
 - Private schools may make exaggerated claims.
 - Private schools may close due to various reasons.
 - You may not get a full refund if you withdraw from your course.



8 Things You Should Know Before You Enrol in A Private School

School Registration



Ensure the school is registered with SkillsFuture Singapore (SSG). Review the school's registration period, expiry date and its overall registration track record.

Partner Institution



Research on the partner institution conferring the diploma or degree, and whether the qualification is recognised by the industry.

EduTrust Certification Scheme

Is the school EduTrust-certified*? Under the scheme, private schools are assessed for their performance in areas such as school management and provision of student support services.



**Schools are required to obtain EduTrust certification in order to offer external degree programmes*

School Premises

Head down to the campus ground to check the facilities and support services. Observe the study environment too.



Fee Protection



Ask if there is any course fee protection so that you will be able to recover unconsumed course fees should the school close down.

Beyond Course fees



Find out about the course syllabus and materials, graduation rates and employment prospects. Approach the alumni to find out what they think of the school.

Teachers

Check if the teachers are qualified to teach the course.



Internship

If industry attachment is included, find out which organisation you will be attached to, the period of attachment and the alternative arrangement should the attachment become unavailable. Verify the information with the organisation as well.



Scan the QR code to book an appt with ECG counsellor

Dates and details	
Face to Face	Tues 14 Jan, Wed 15 Jan Venue: COVE
Online via MS Teams	Mon 13 Jan, Thurs 16 Jan (Link to be provided upon confirmation)
Email	chia_yee_teng@moe.edu.sg



<https://go.gov.sg/shssecgappt>



TRUST

in
the LORD

with
All Your Heart

and lean not unto your own

UNDERSTANDING

in ALL thy ways

ACKNOWLEDGE HIM

and he shall

Direct

THY PATHS

PROVERBS 3:5-6